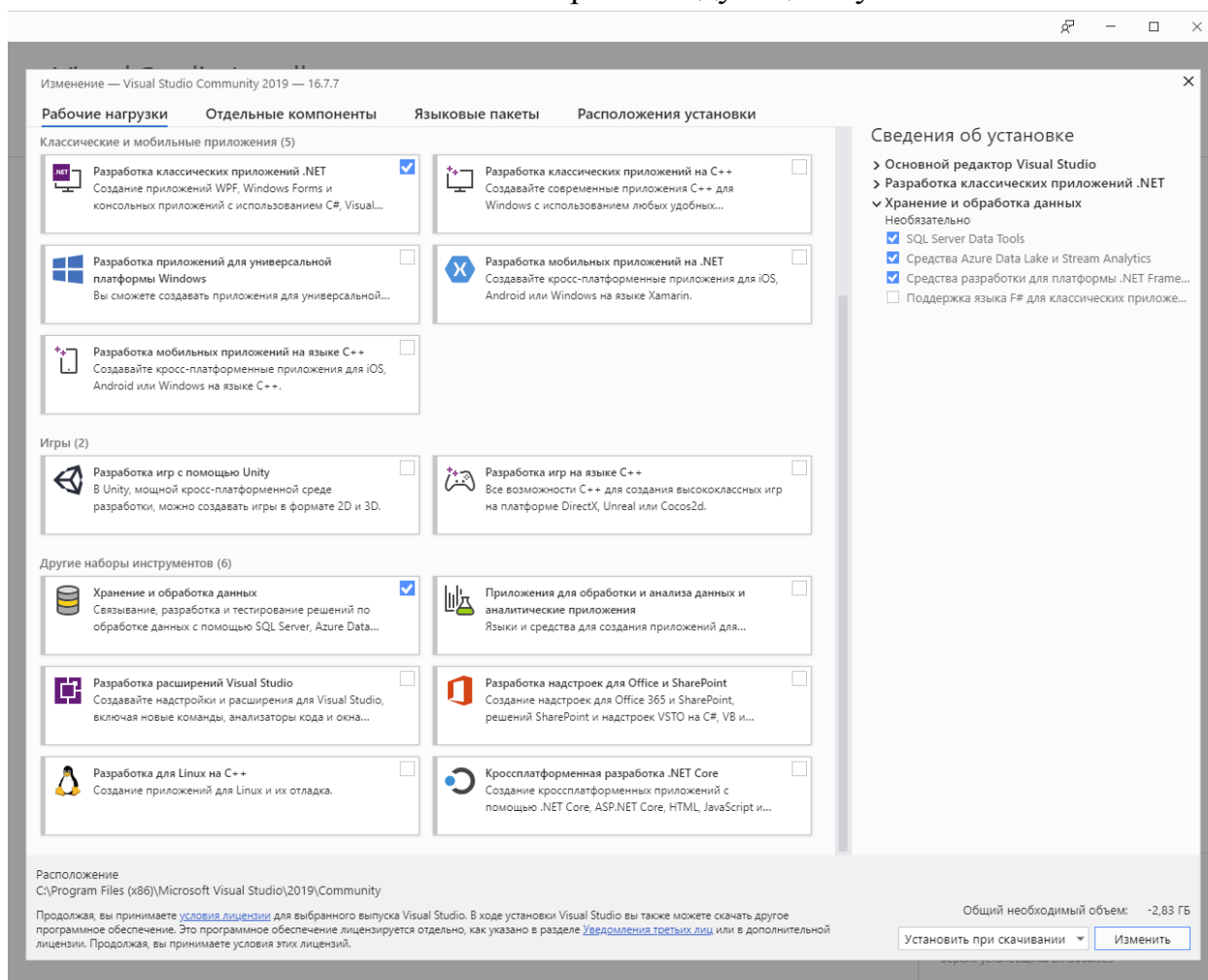


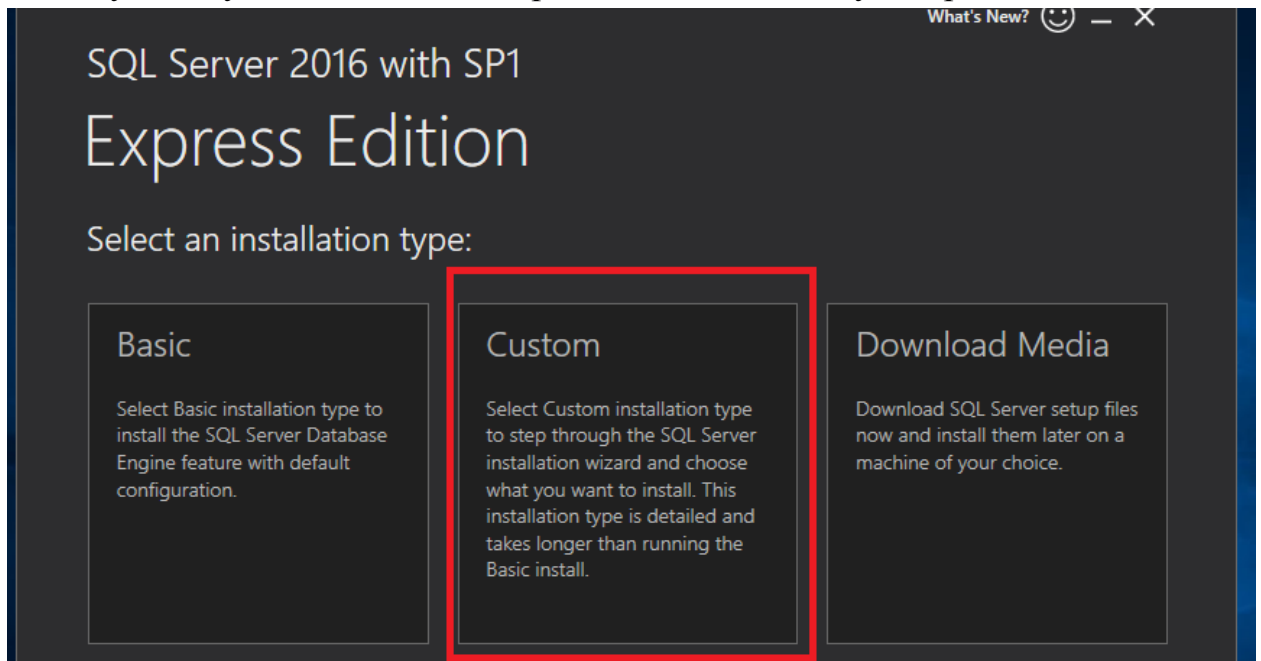
Инструкция по установке VisualStudio 2019

Для того что бы установить VisualStudio 2019 необходимо:

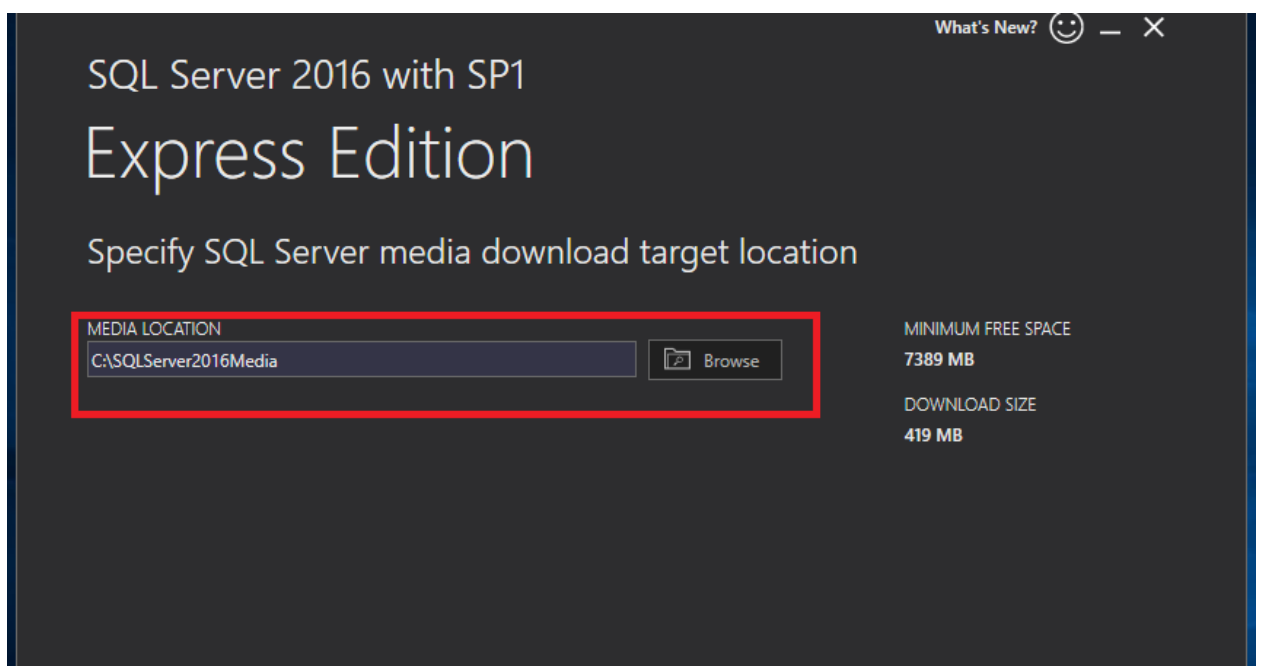
1. Пройдите по ссылке <https://visualstudio.microsoft.com/ru/vs/> и скачайте веб-установщик
2. Выберите версию Community 2019;
3. В окне Visual Studio Installer выберите следующие пункты:



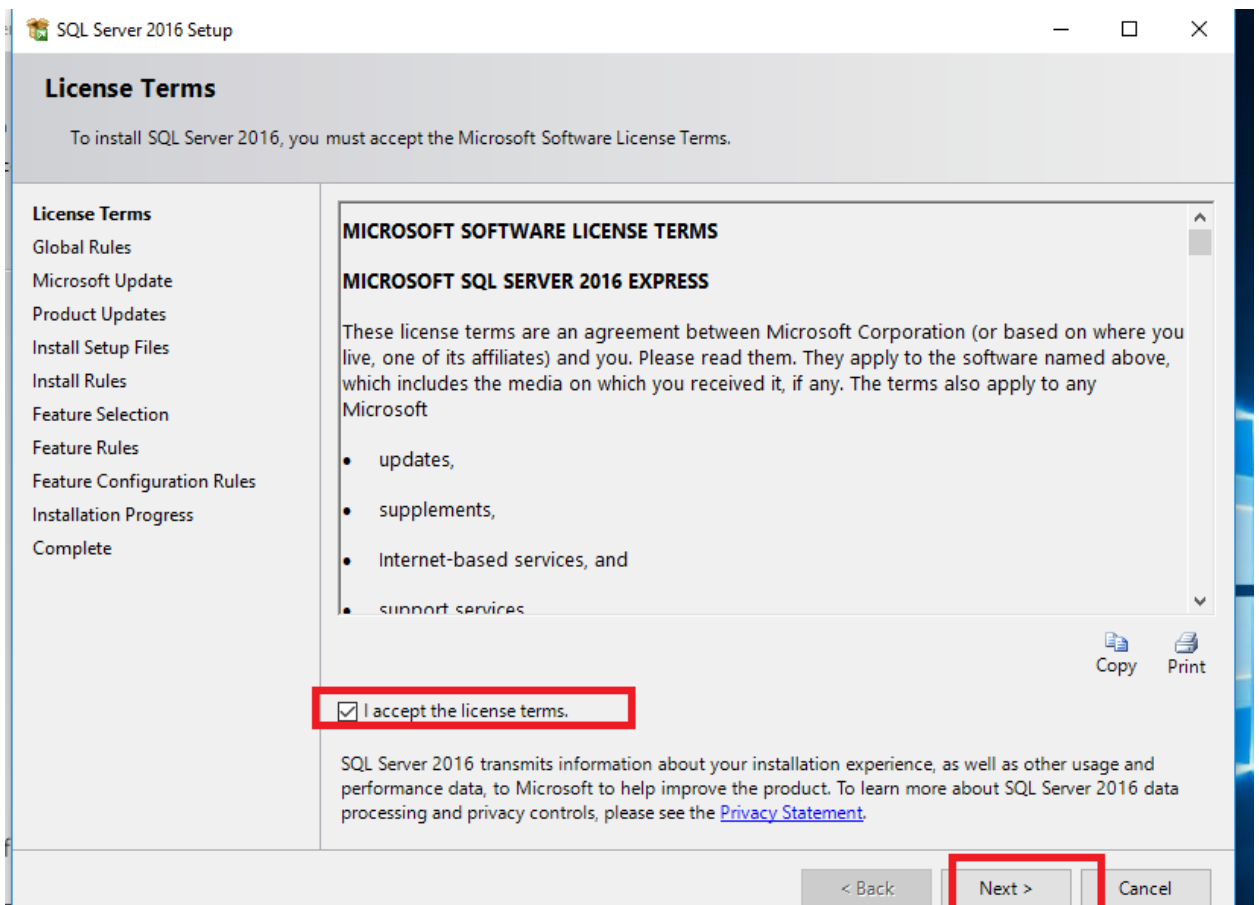
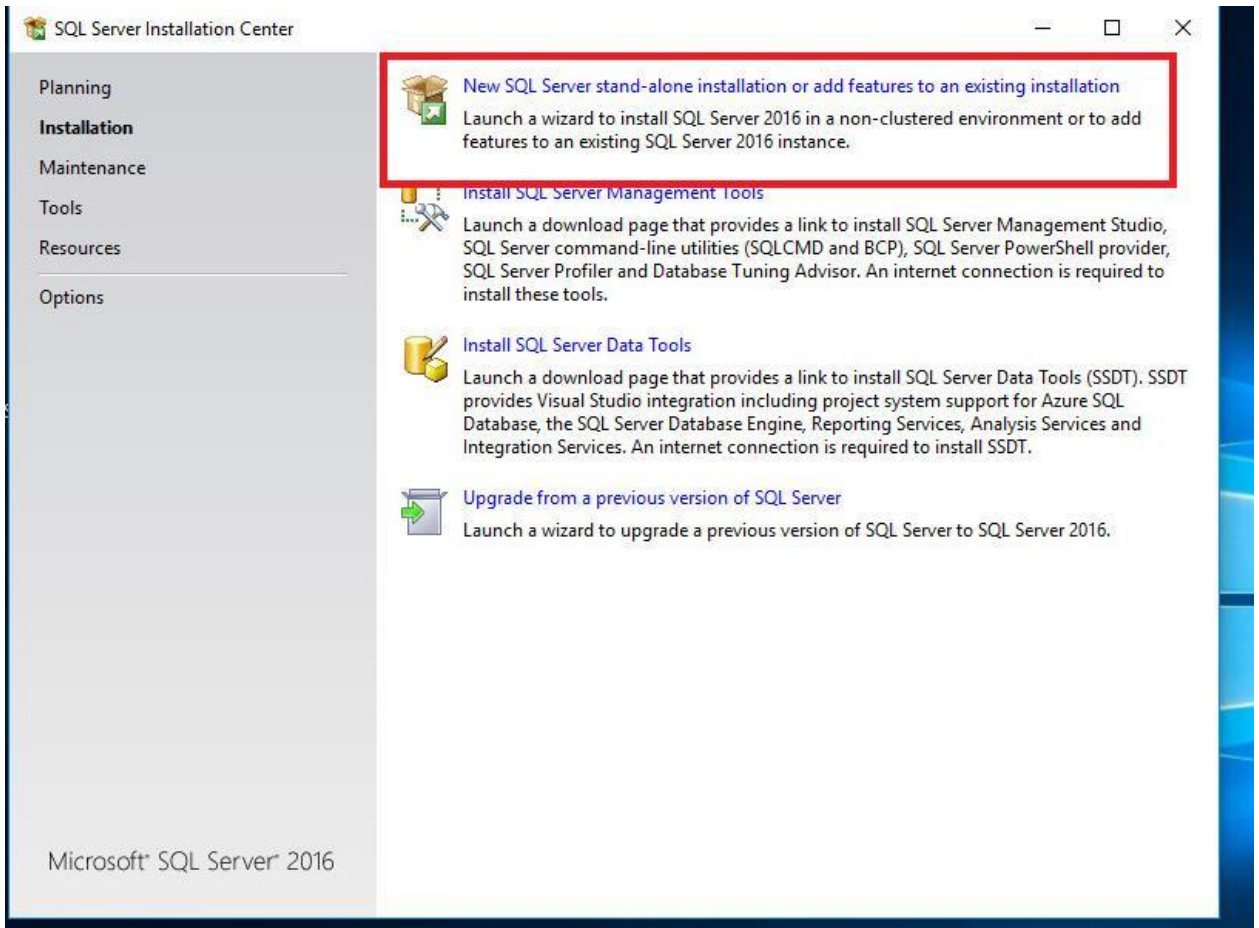
1. Для установки SQLServer 2016 перейдите по ссылке и скачайте веб-установщик. <https://www.microsoft.com/ru-ru/download/details.aspx?id=56840>
2. Запустите установщик и выберите пользовательскую версию;

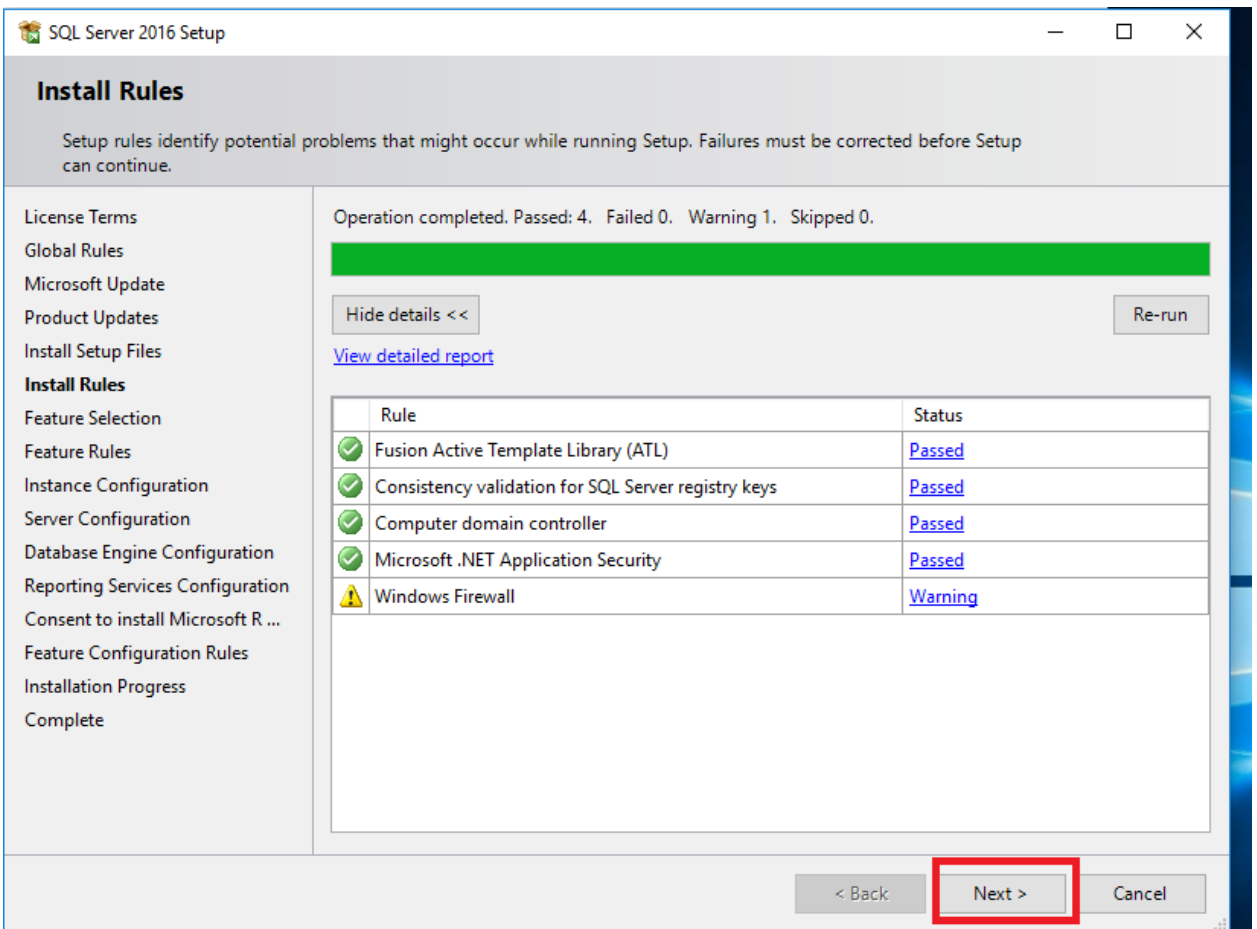
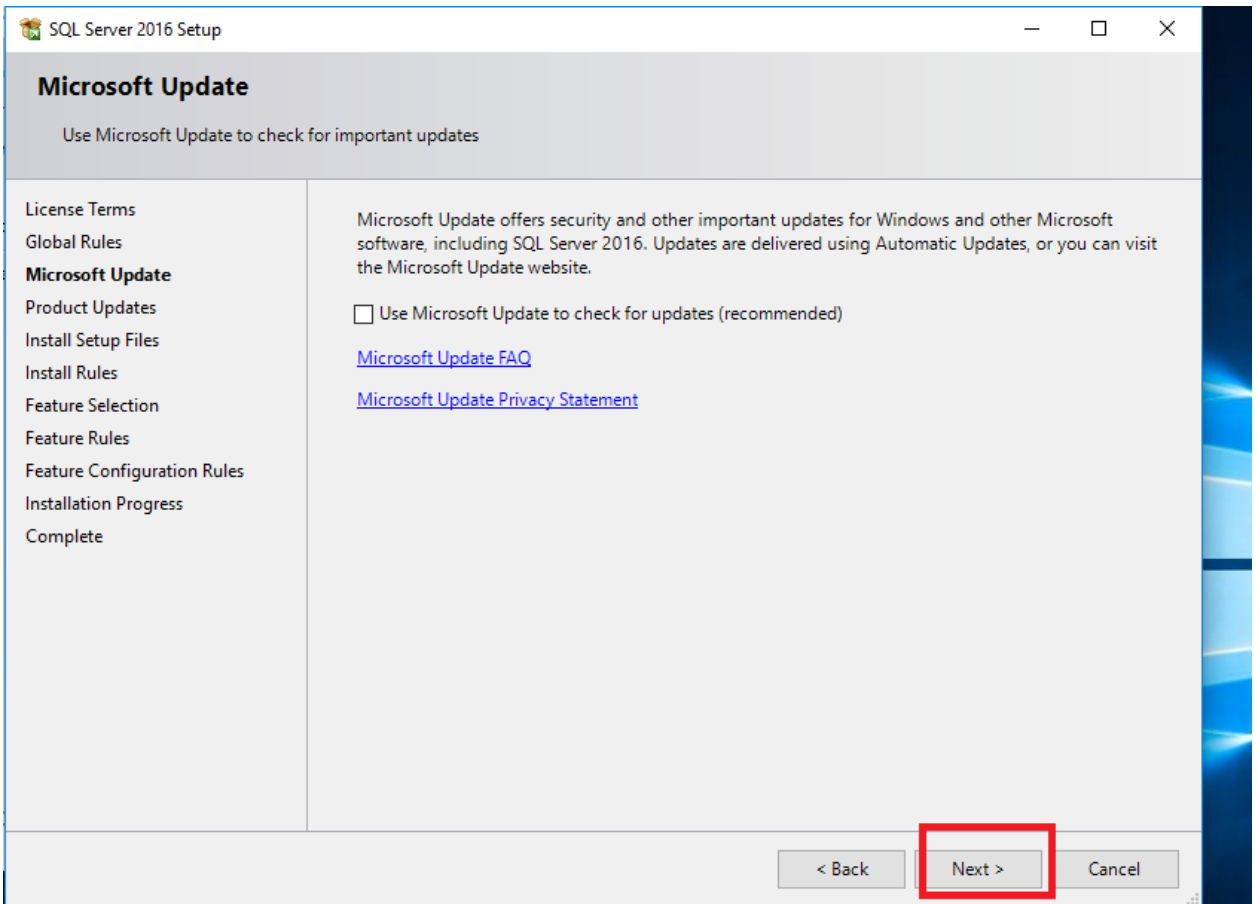


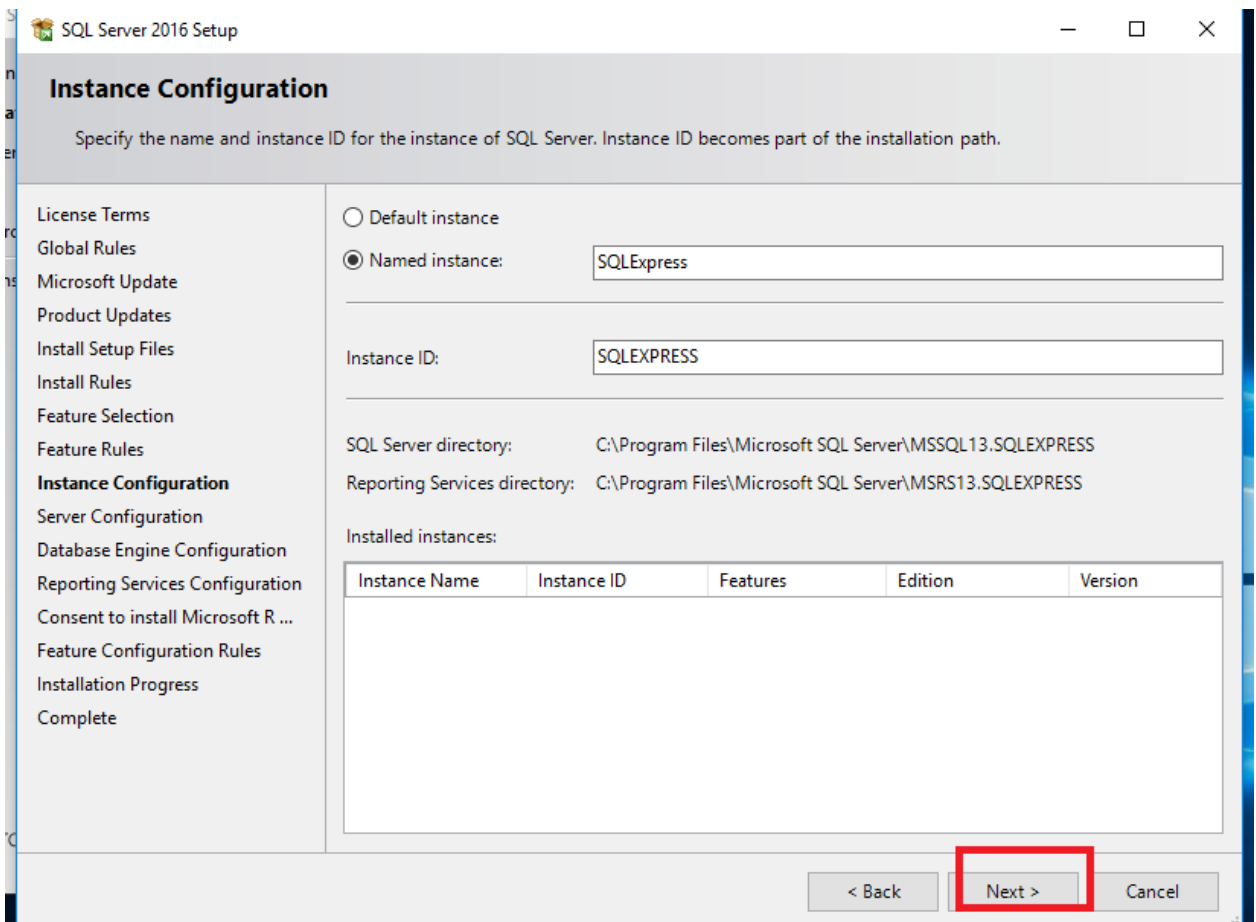
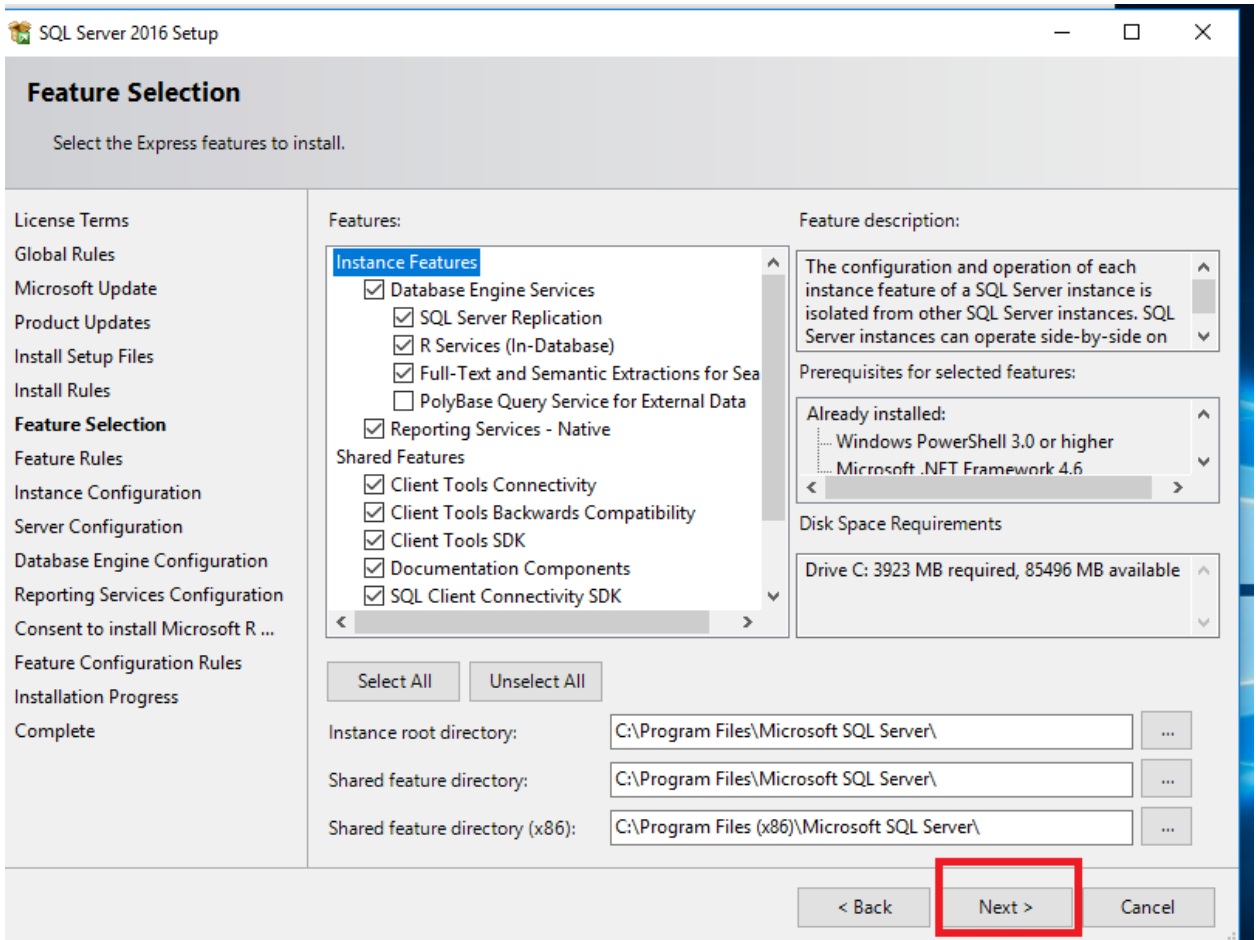
3. Укажите путь для скачивания дистрибутива



4. Следуйте инструкции







Server Configuration

Specify the service accounts and collation configuration.

License Terms

Global Rules

Microsoft Update

Product Updates

Install Setup Files

Install Rules

Feature Selection

Feature Rules

Instance Configuration

Server Configuration

Database Engine Configuration

Reporting Services Configuration

Consent to install Microsoft R ...

Feature Configuration Rules

Installation Progress

Complete

Service Accounts Collation

Microsoft recommends that you use a separate account for each SQL Server service.

Service	Account Name	Password	Startup Type
SQL Server Database Engine	NT Service\MSSQL\$SQL...		Automatic ▾
SQL Server Reporting Services	NT Service\ReportServer...		Automatic ▾
SQL Server Launchpad	NT Service\MSSQLLaun...		Automatic
SQL Full-text Filter Daemon Launc...	NT Service\MSSQLFDLa...		Manual
SQL Server Browser	NT AUTHORITY\LOCAL ...		Disabled ▾

Grant Perform Volume Maintenance Task privilege to SQL Server Database Engine Service

This privilege enables instant file initialization by avoiding zeroing of data pages. This may lead to information disclosure by allowing deleted content to be accessed.

[Click here for details](#)

< Back

Next >

Cancel

Database Engine Configuration

Specify Database Engine authentication security mode, administrators, data directories and TempDB settings.

License Terms

Global Rules

Microsoft Update

Product Updates

Install Setup Files

Install Rules

Feature Selection

Feature Rules

Instance Configuration

Server Configuration

Database Engine Configuration

Reporting Services Configuration

Consent to install Microsoft R ...

Feature Configuration Rules

Installation Progress

Complete

Server Configuration Data Directories TempDB User Instances FILESTREAM

Specify the authentication mode and administrators for the Database Engine.

Authentication Mode

Windows authentication mode

Mixed Mode (SQL Server authentication and Windows authentication)

Specify the password for the SQL Server system administrator (sa) account.

Enter password:

Confirm password:

Specify SQL Server administrators

DESKTOP-VO2JBKJ\Admin (Admin)
DESKTOP-VO2JBKJ\Administrator (Administrator)

SQL Server administrators have unrestricted access to the Database Engine.

Add Current User

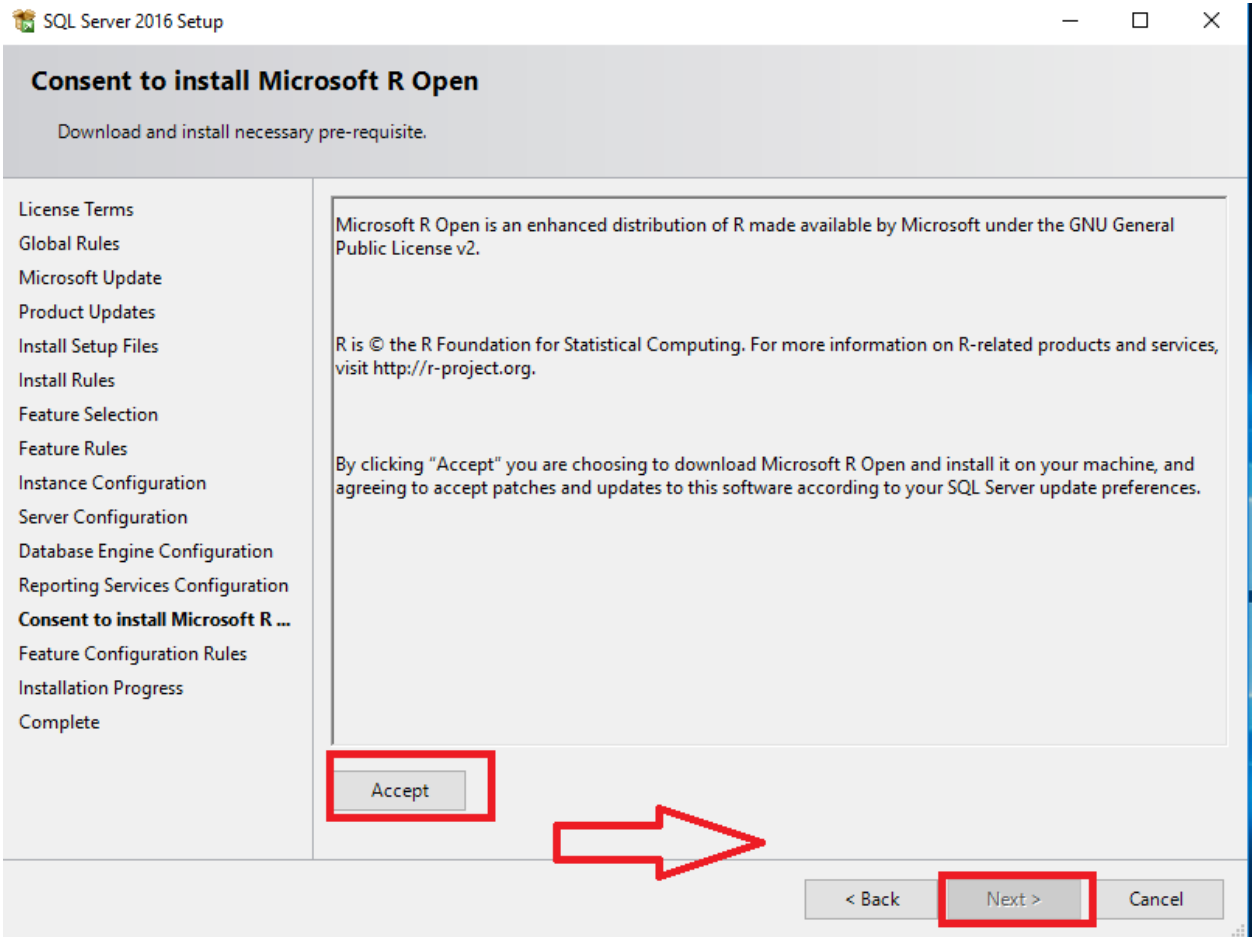
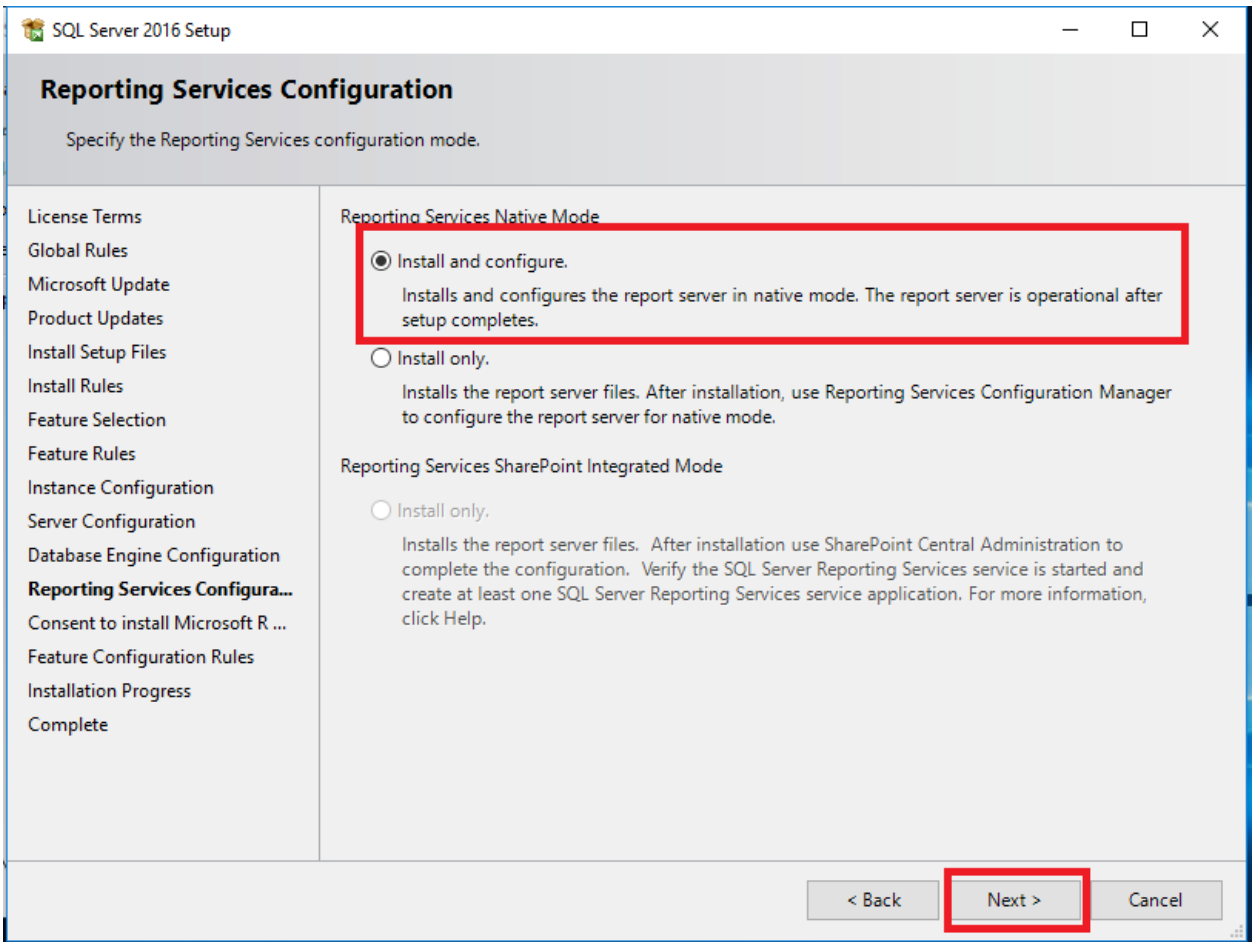
Add...

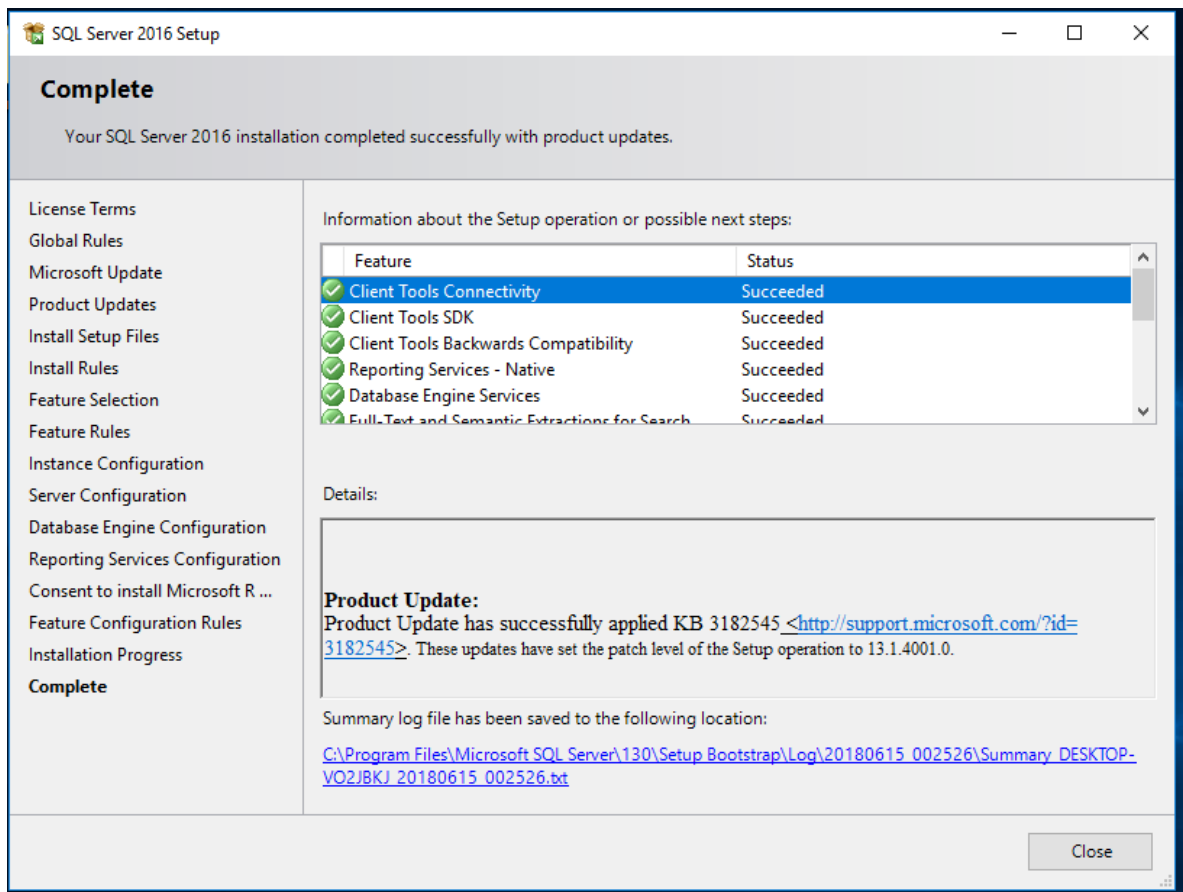
Remove

< Back

Next >

Cancel





5. Установка SQL MANAGEMENT STUDIO. Скачайте SSMS по ссылке и запустите установщик

<https://docs.microsoft.com/ru-ru/sql/ssms/download-sql-server-management-studio-ssms?view=sql-server-ver15>

